

# HerpKeeper

## Quick Start Guide



## More Information

Digital Aquatics has taken the lead in customer support with a number of options to suit your busy life.

### E-mail Support

When you need help and can't call in, e-mail any time and we'll respond within one business day.

**E-mail: [support@digitalaquatics.com](mailto:support@digitalaquatics.com)**

### Forum Support

We update and maintain the largest knowledge base of any controller company on our own dedicated support forum. The support forum is a great place to search for answers, ask questions, and get help, advice and suggestions from our very large and experienced customer base and Digital Aquatics staff members.

**Forum: [www.forum.digitalaquatics.com](http://www.forum.digitalaquatics.com)**

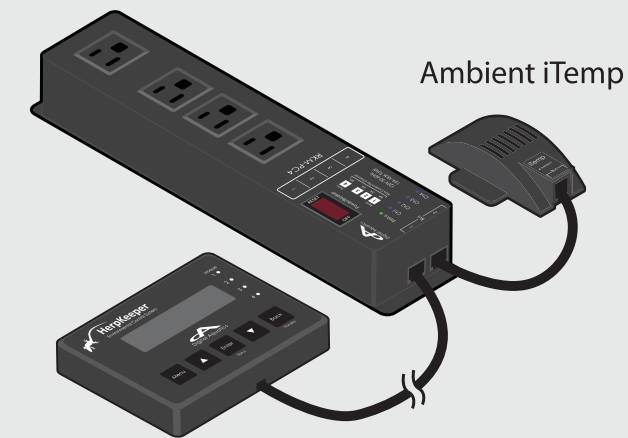
## Product Warranty

Digital Aquatics offers an industry leading two year warranty on all system head units and modules against manufacturer's defects. Units will be repaired or replaced (at our discretion) in compliance with our warranty program. This does not cover water damage, abuse, or shipping damage.

Digital Aquatics probes and accessories have warranties ranging from 1 year to 90 days depending on the item. This covers the product from manufactures defects.

Complete warranty details can be found on our support forum at [www.forum.digitalaquatics.com](http://www.forum.digitalaquatics.com)

## HK BASIC



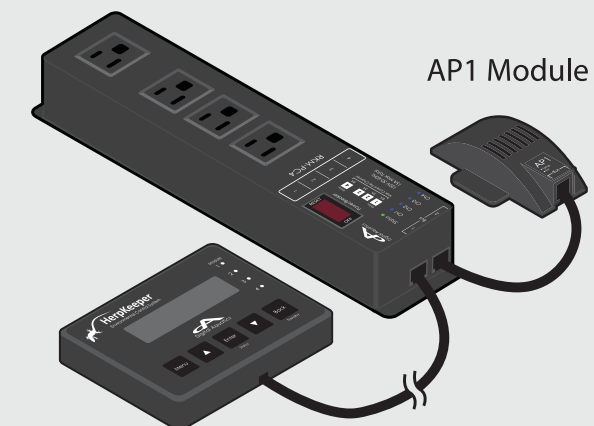
**HK BASIC: Connection Example**

### HK BASIC: Package Contents

- 1 x HerpKeeper Head Unit
- 1 x PC4 Module
- 1 x Ambient iTemp
- 1 x SID \*
- 1 x Programming Coupler \*
- 1 x 6' Bus Cable
- 6 x Mounting Screws \*

\* Not shown in image

## HK PLUS



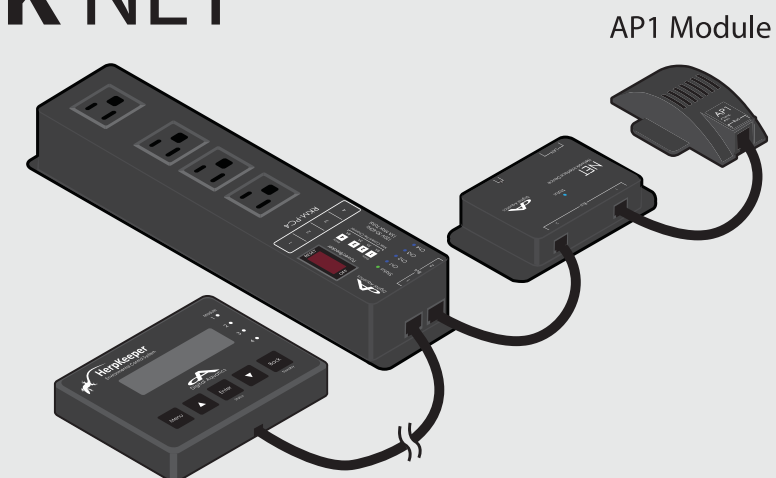
**HK PLUS: Connection Example**

### HK PLUS: Package Contents

- 1 x HerpKeeper Head Unit
- 1 x PC4 Module
- 1 x AP1 Module
- 1 x SID \*
- 1 x Programming Coupler \*
- 1 x 6' Bus Cable
- 6 x Mounting Screws \*

\* Not shown in image

## HK NET



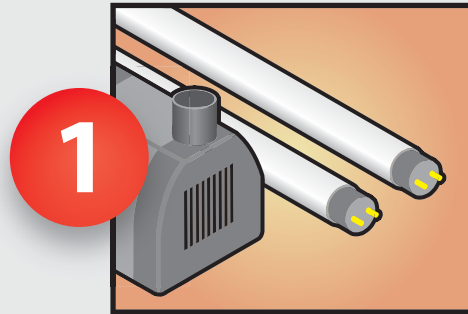
**HK NET: Connection Example**

### HK NET: Package Contents

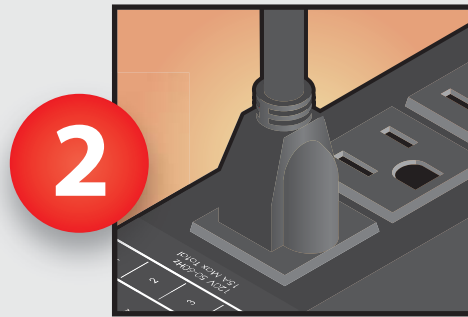
- 1 x HerpKeeper Head Unit
- 1 x PC4 Module
- 1 x AP1 Module
- 1 x NET Module
- 1 x SID \*
- 1 x Programming Coupler \*
- 1 x 6' Bus Cable
- 1 x 3' Bus Cable
- 1 x 7' CAT5 Ethernet Cable \*
- 8 x Mounting Screws \*

\* Not shown in image

## Getting Started



**Pick a Device**  
Select a device you would like the HK system to control, such as a light or heater.



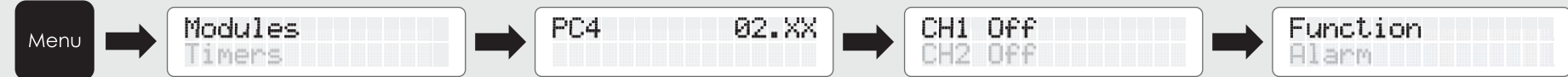
**Select a Channel**  
Depending on the type of the device, select a channel on a PC4 and plug it in.



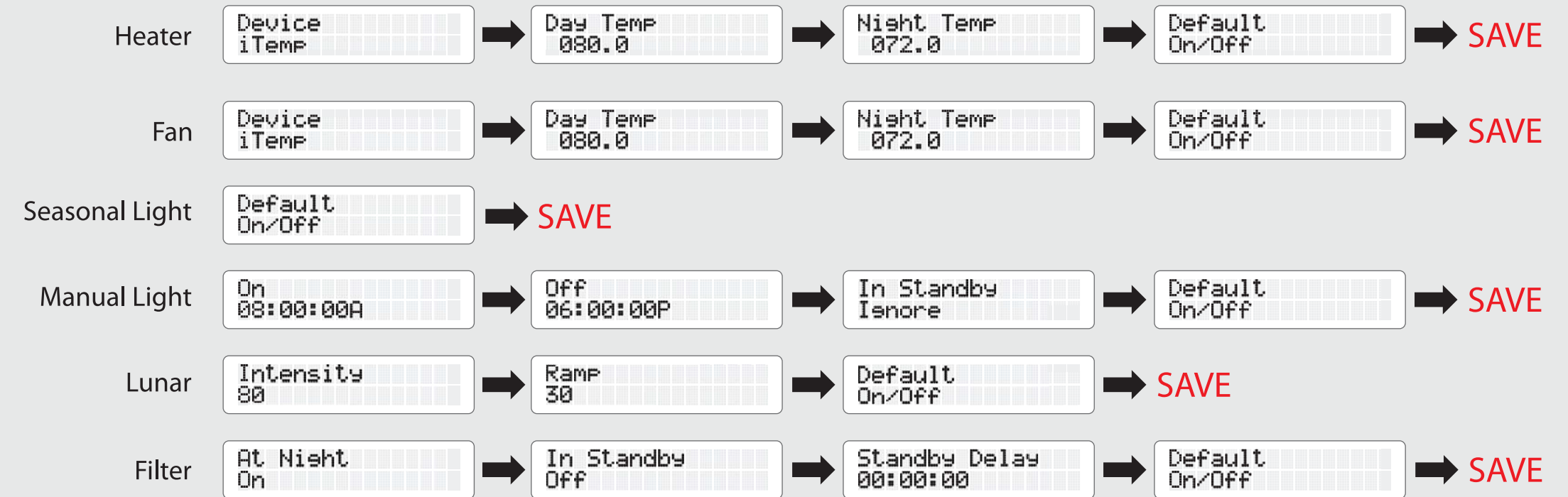
**Program the Channel**  
Use the HK to program the desired function to the channel in step 2. See the basic programming guide.

## Basic Programming Guide\*

How to set up a function...

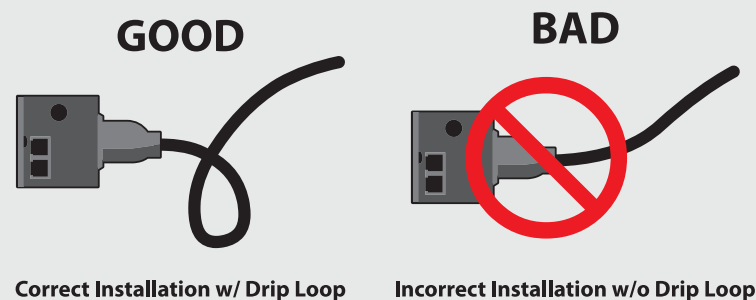


Choosing the right function...



## Mounting

Care and discretion should be used when installing your system modules. Proper installation practices should be used for continued safe operation. Never place or mount any module directly on the ground as doing so may allow water to flow down a cord or lead to a potential safety hazard or module failure. Even if you properly mount a module on a wall or cabinet, drip loops must be used to help reduce the risk of water intrusion into the unit.



Correct Installation w/ Drip Loop      Incorrect Installation w/o Drip Loop

## AP1 and Ambient iTemp Mounting

The AP1 must be mounted in a location out of direct light and moisture. This is required in order to avoid errant readings in temperature and humidity.



## HerpKeeper FAQs

- Q** My home screen displays "None". How can I change that?  
**A** By pressing the [Up] or [Down] button you are able to cycle through the probes and outlets on your system and display the current status on the home screen. Once you come to the data that you want to view or display, you can leave it on the screen and it will continue to show that information.
- Q** What devices can I plug into my PC4 and is there a difference between the outlets?  
**A** The PC4 can manage up to 15 amps (1800 Watts) of power. There are ratings for each channel printed on the PC4. Channels 1 & 4 are standard relays and are rated up to 8 amps each. Channels 2 & 3 are a different kind of switch and have a rating of 3 amps each. As long as you don't exceed the posted ratings on the channels (and the total on the PC4) you are free to plug almost any device into any outlet.
- Q** Can I expand my HerpKeeper to take advantage of new modules and features?  
**A** Yes! The HerpKeeper can be expanded to monitor and control much more than what you may think. Refer to the Digital Aquatics product catalog that came with your system or check out our website to see all the module and accessory options we offer.